



# PUSTUN

# PT24-12 12V24Ah

Agm Battery Series

## GENERAL FEATURE

- Absorbent Glass Mat(AGM) technology for efficient gas recombination of up to 99% and freedom from electrolyte maintenance or water adding.
- Not restricted for air transport-complies with IATA/ICAO Special Provision A67.
- UL-recognized component.
- Can be mounted in any orientation.
- Computer designed lead, calcium tin alloy grid for high power density.
- Long service life, float or cyclic applications.
- Maintenance-free operation.
- Low self discharge.

QR CODE :

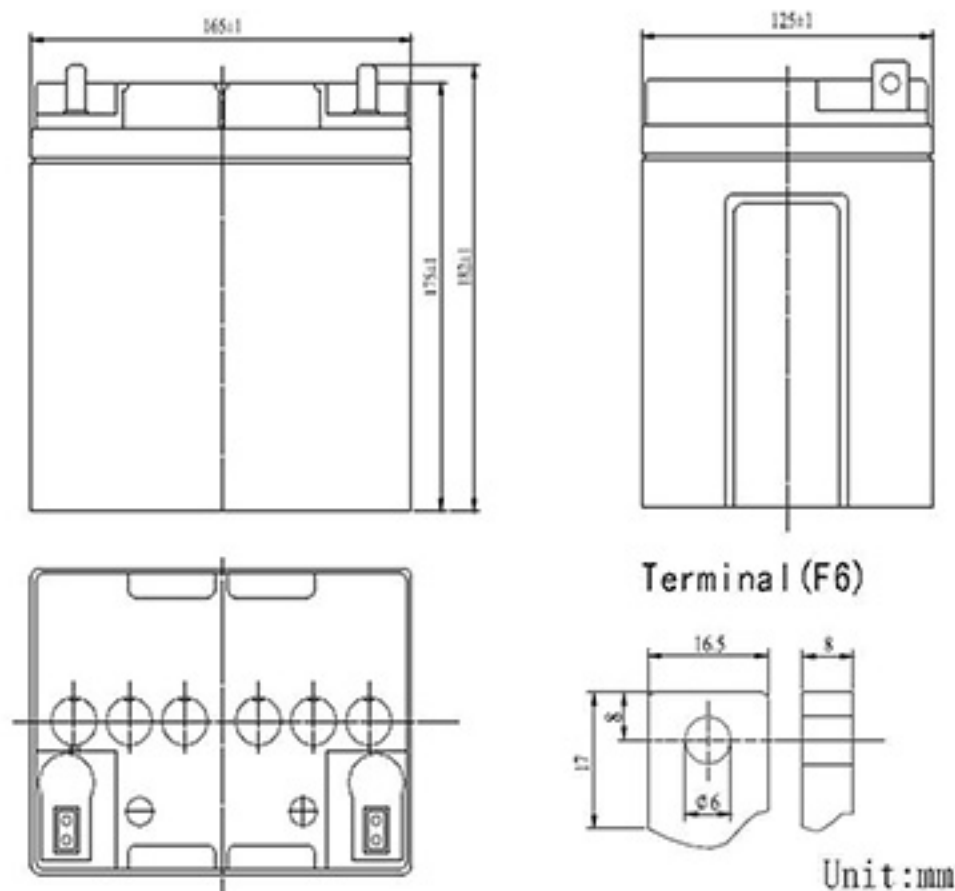
Find more new coming product what you need, info@store-ace.com.



PUSTUN New Products

## SPECIFICATION

- Nominal voltage ..... 12V
- Number of cell ..... 6
- Length(mm/inch) ..... 165/6.50
- Width(mm/inch) ..... 125/4.92
- Height(mm/inch) ..... 175/6.89
- Total Height(mm/inch) ..... 182/7.17
- Approx.Weight(kg/lbs) ..... 7.6/16.8



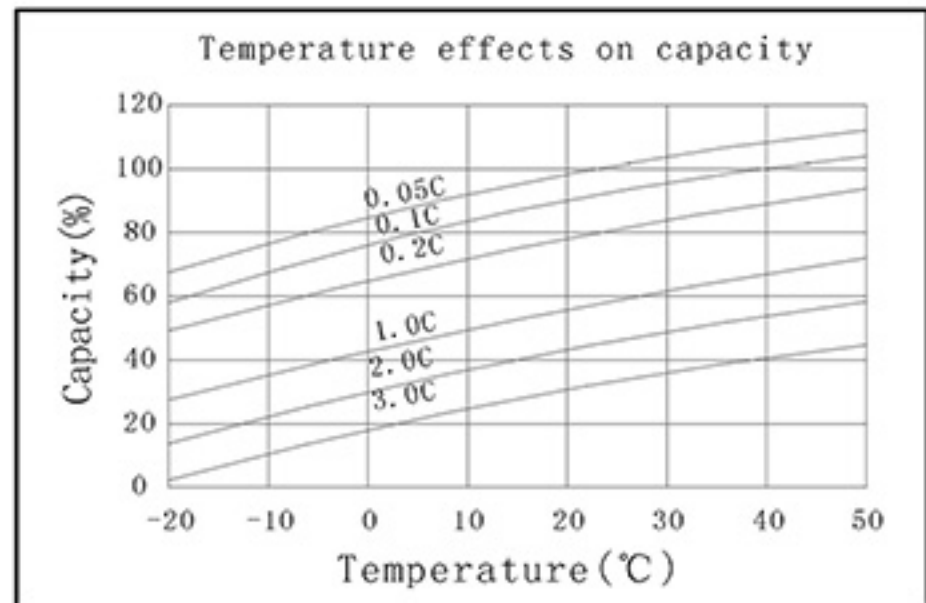
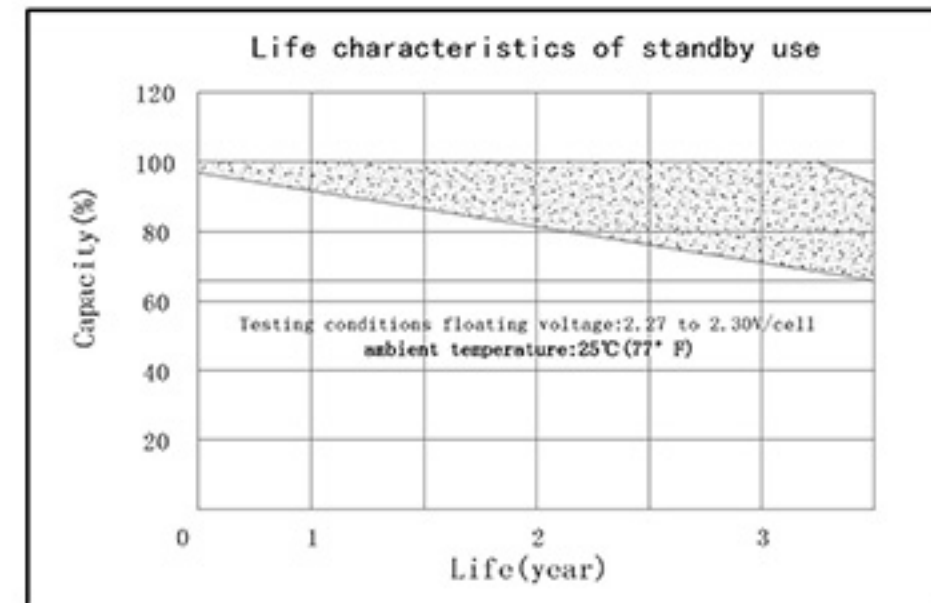
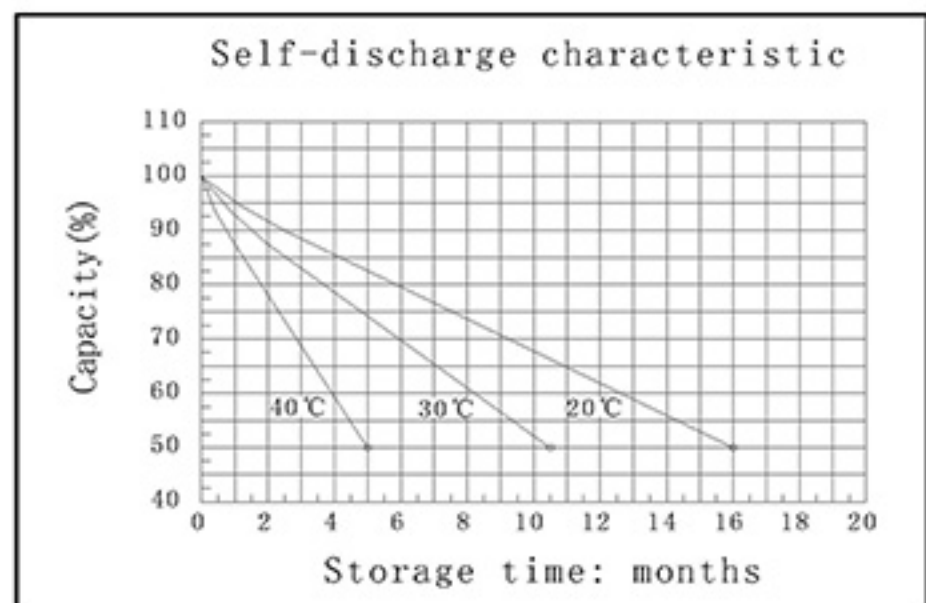
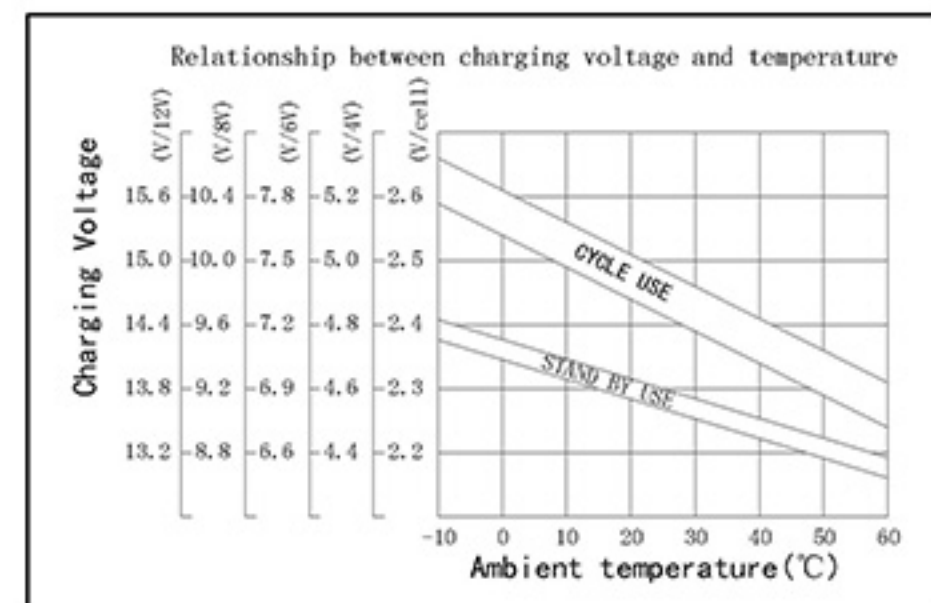
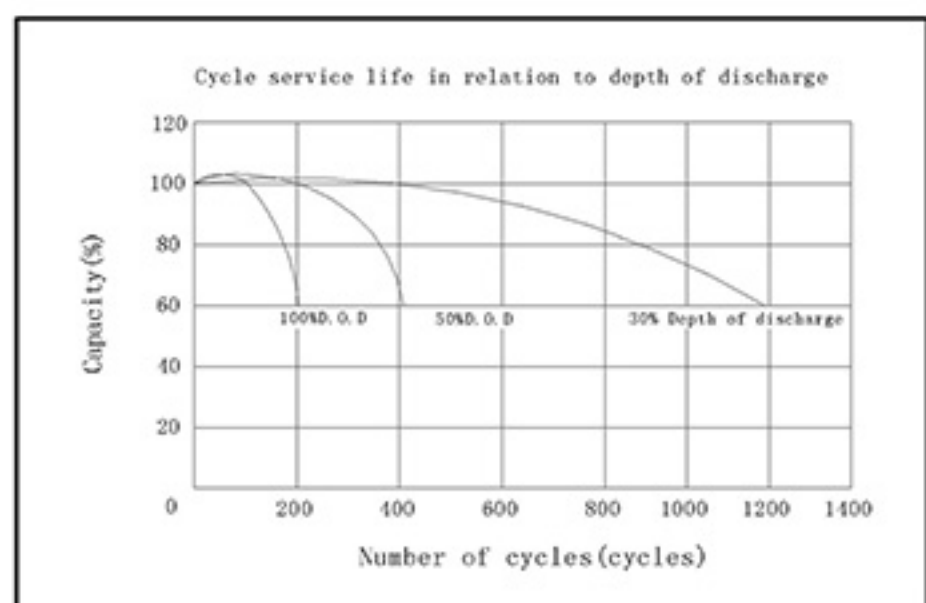
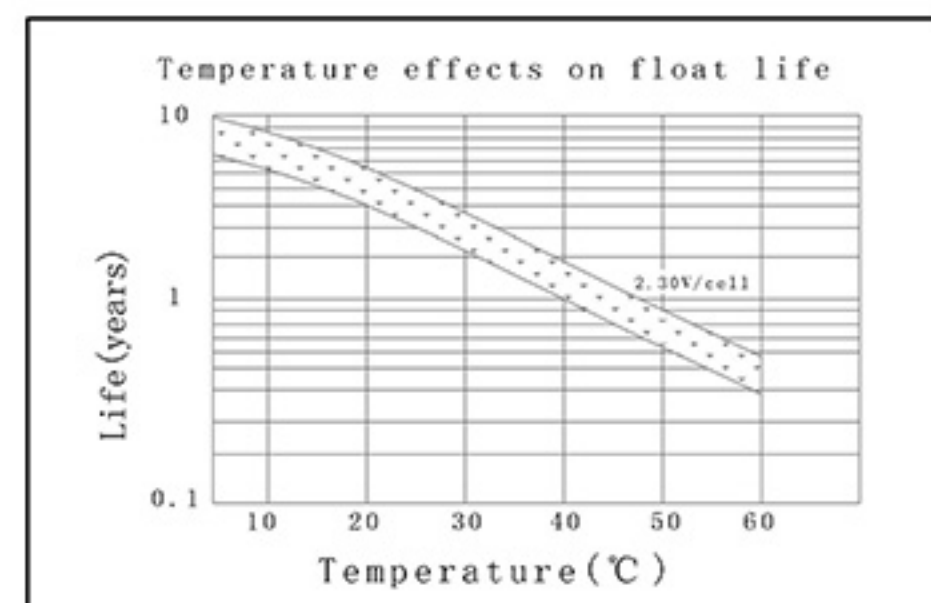
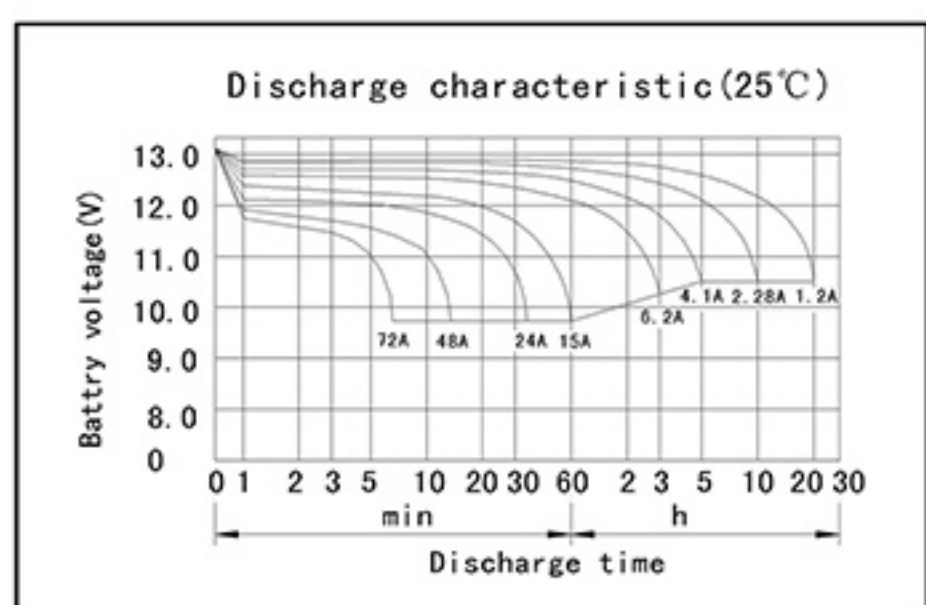
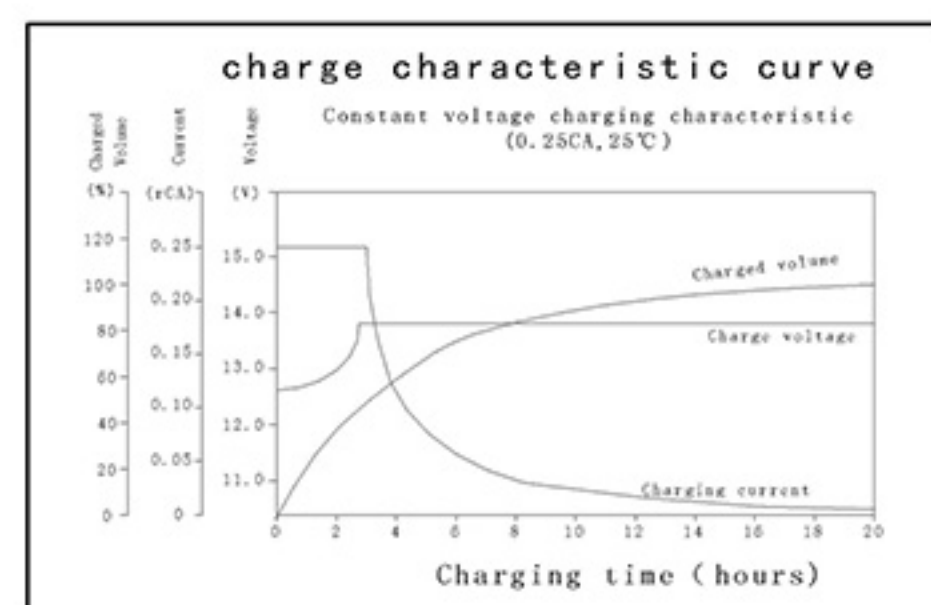
## MATERIAL

Component	Positive plate	Negative plate	Container	Cover	Safety valve	Terminal	Separator	Electrolyte
Raw material	Lead dioxide	Lead	ABS	ABS	Rubber	Copper	Fiberglass	Sulfuric acid

## CONFIGURATION

Capacity 77°F(25°C)	20 hours rate(1.2A 10.5V)	24.0Ah
	10 hours rate(2.28A 10.5V)	22.8Ah
	5 hours rate(4.1A 10.5V)	20.5Ah
	1 hour rate(15.0A 9.6V)	15.0Ah
Internal Resistance	Full charged battery 77°F(25°C):12mΩ	
Capacity affected by Temperature (20 hour rate)	104°F(40°C)	102%
	77°F(25°C)	100%
	32°F(10°C)	85%
	5°F(-15°C)	65%
Self-Discharge 68°F(20°C)	Capacity after 3 month storage	90%
	Capacity after 6 month storage	80%
	Capacity after 12 month storage	60%
Max discharge current 77°F(25°C):300A(5S)		
Charge (Constant Voltage)	Float:13.6 to 13.8V/77°F(25°C)	
	Cycle:14.5 to 14.9V/77°F(25°C) Max Current:6A	

## PERFORMANCE REPORT



End Point Volts/Cell	5min	10min	15min	30min	1h	3h	5h	10h	20h
1.60V	95.0	64.0	48.0	28.5	15.0	6.68	4.47	2.41	1.24
1.65V	90.1	60.9	45.9	27.4	14.6	6.44	4.26	2.35	1.23
1.70V	84.9	57.8	43.7	26.2	14.2	6.20	4.24	2.31	1.22
1.75V	79.7	54.5	41.1	24.9	13.7	5.95	4.10	2.28	1.20
1.80V	74.3	51.3	39.1	23.6	13.2	5.71	3.95	2.25	1.18

(Note)The above characteristics data are average values obtained Within three charge/discharge cycles not the minimum values.

End Point Volts/Cell	5min	10min	15min	30min	45min	1h	2h	3h	5h
1.60V	185	121	90.0	55.0	40.0	31.7	19.6	13.4	8.54
1.65V	173	114	85.1	52.3	38.2	30.3	19.0	13.1	8.39
1.70V	161	107	80.2	49.4	36.3	28.9	18.3	12.5	8.22
1.75V	151	99.7	75.2	46.6	34.3	27.5	17.6	12.0	8.03
1.80V	139	92.7	70.3	43.7	32.3	26.0	16.9	11.4	7.83

(Note)The above characteristics data are average values obtained Within three charge/discharge cycles not the minimum values.